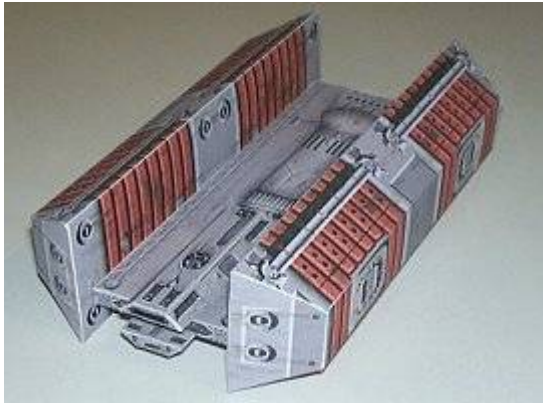


Paper Starwars Models





Then, build front module



And both guns

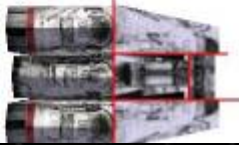
Bridge module isnt hard, but dont forget that it got hole here

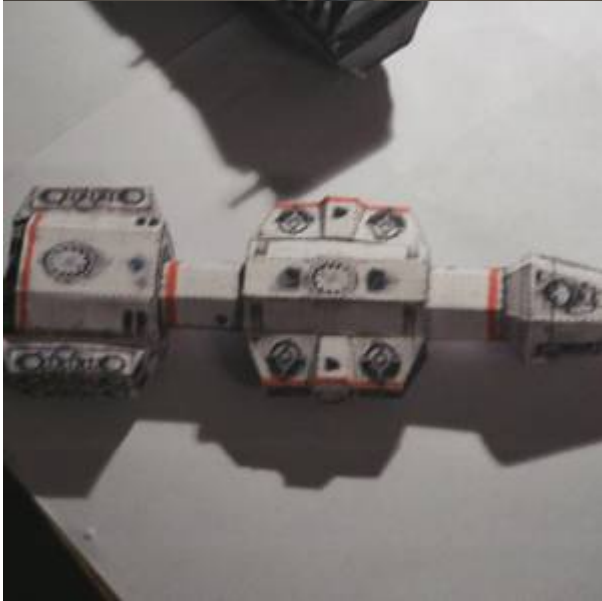


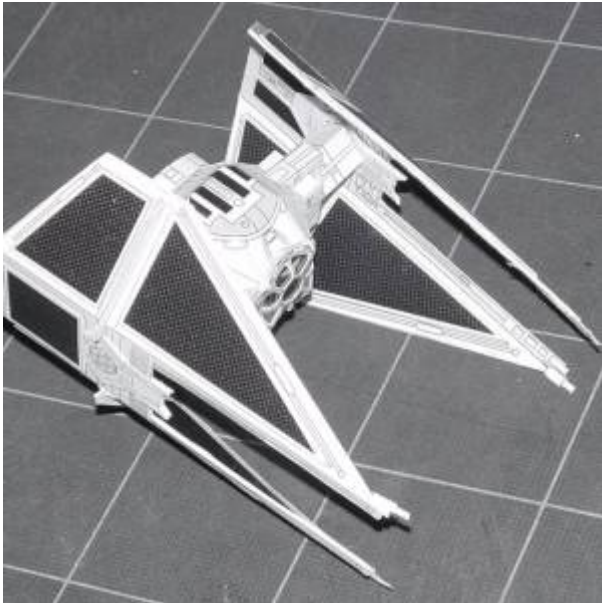
Build Reactor module and connect it to hallway. Note: Hallway recuest cutting to fill to core



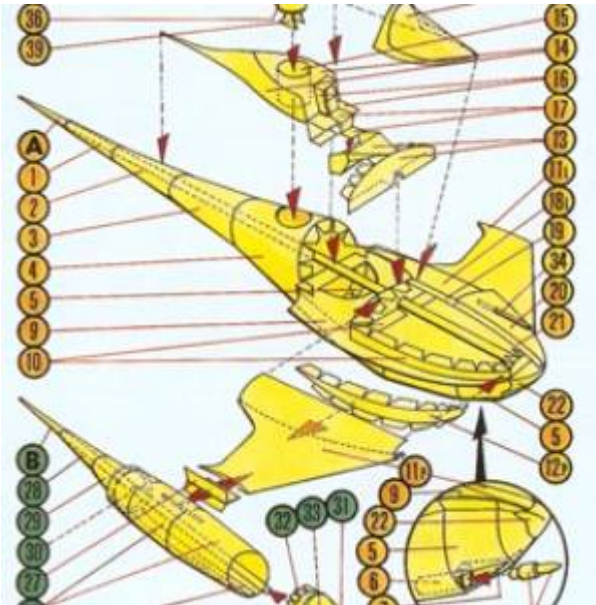
Engine module is maded with 4 hull elements, and 11 engines. Fold them, and connect together.

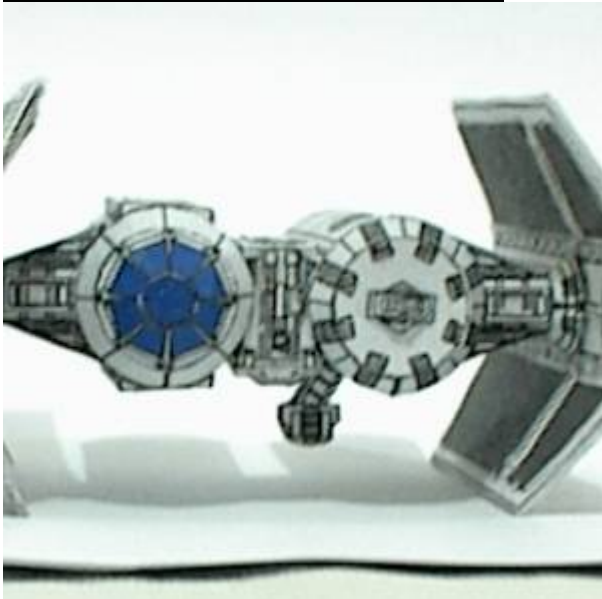
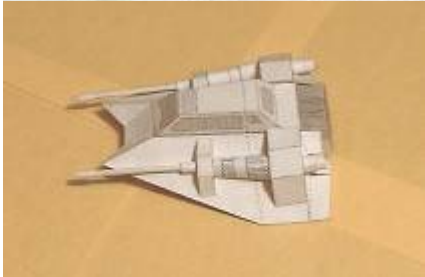
















From:
<https://curufea.com/> - **Curufea's Homepage**

Permanent link:
<https://curufea.com/doku.php?id=art:paperstarwars>

Last update: **2013/03/16 03:41**

